

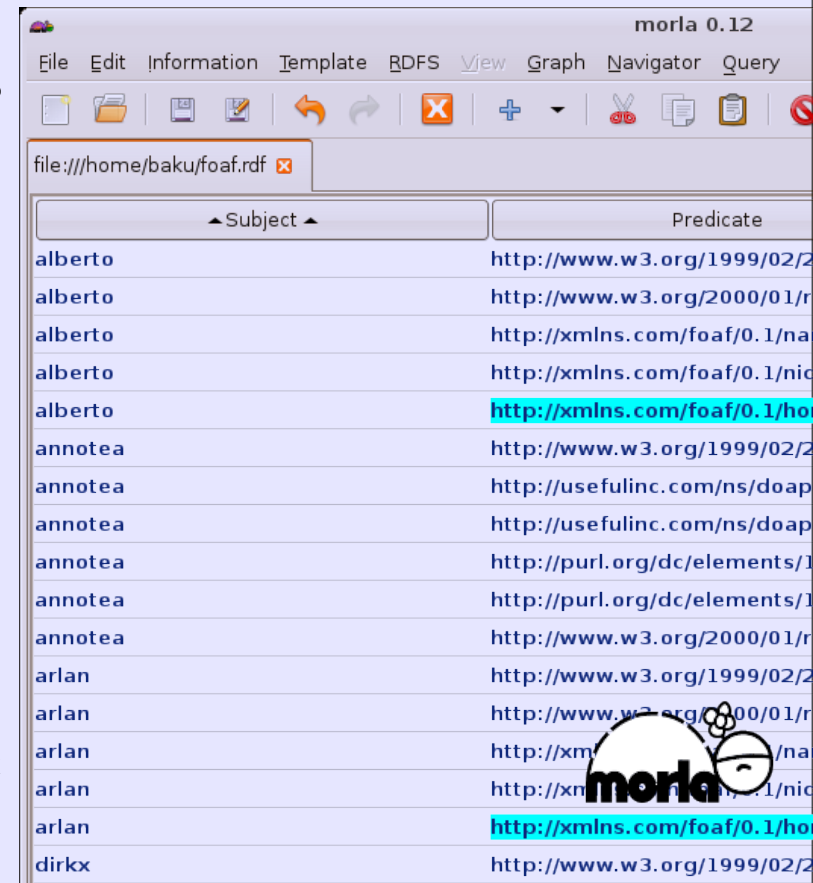


- WebSite: <http://www.morlardf.net>
- License: GPL v2.0
- Author: Andrea Marchesini
- OS: GNU/Linux, \*BSD, Windows

# What is Morla?

It is a multiplatform editor of RDF documents:

- Open, save, modify RDF Documents
- Search RDF Document into web pages
- It supports RDF/XML, N-Triples, Turtle
- Import RDFSchema



Morla - <http://www.morlardf.net>

# Create a Document!

- Import RDFSchemas (FOAF, DC, DOAP, ...)
- Create RDF triples
- Check the datatypes
- Describe a node (resource, bnode)
- Create graphs
- Browser it

morla 0.12 - Add RDF triple...

**Subject**

Resource:

This Document

**Predicate**

**Predicate**

RDFS:

Property:

**Information**

Label:

Comment:

Domain:

Range:

**Predicate Item**

Number:

**Object**

Type:  Literal  Resource  Blank node

Language:

Datatype:

Value:

# Morla's templates?

A RDF Document is “Schema-Less”:

... a FOAF Personal Profile Document is not a model!

... a model for DublinCore descriptions doesn't exist!

- we can use different classes and different properties from different vocabularies (RDFSchema)
- But... sometimes... a model could be useful!

# Morla's templates?

**<http://www.morlardf.net/morla#>**

is a RDFSchema for Morla's templates

- **Classes** - Template, Input
- **Properties** - hasInput, hasVersion, hasDefaultValue, hasRDFS, hasDatatype, minCardinality, ...

A template is RDF Document that describes a model for RDF Documents. Morla is able to create wizards from templates

# Morla's templates?

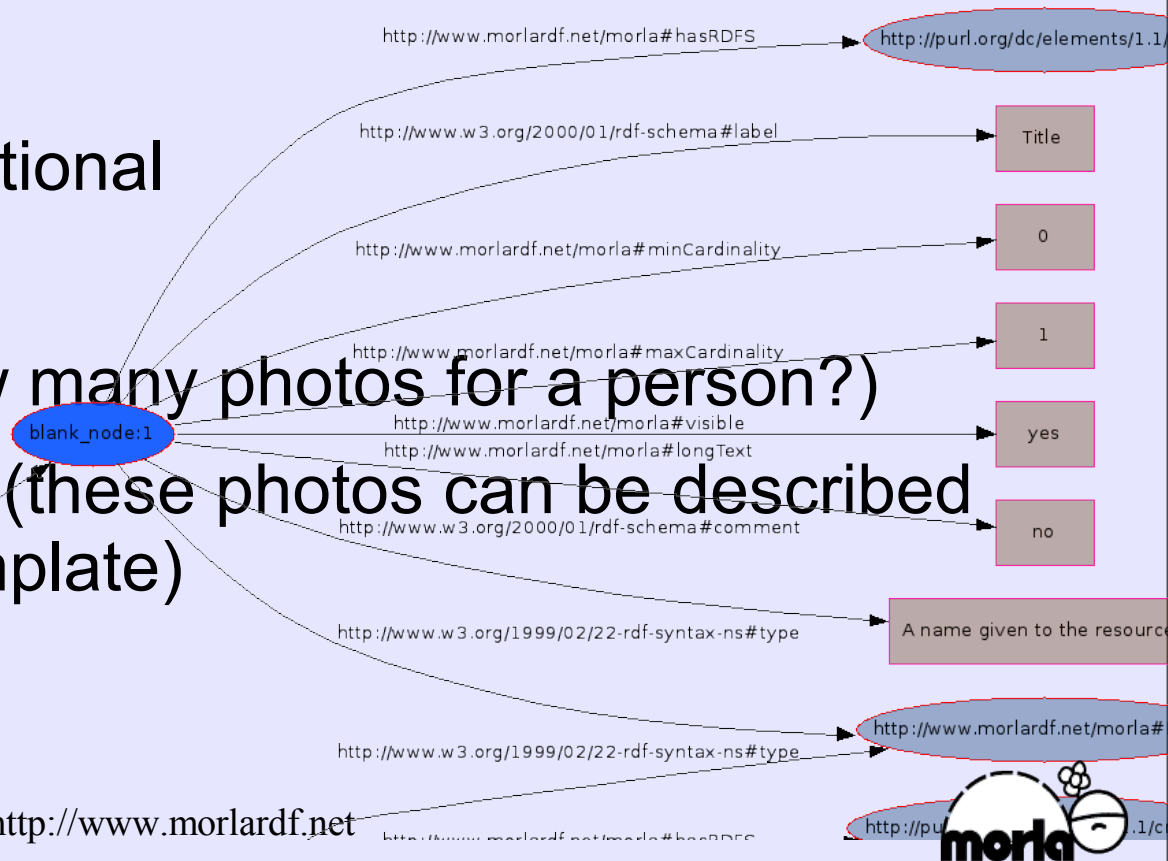
Is there some template?

- FOAF Personal Profile Document, FOAF Person, FOAF group and FOAF image
- RDFS Class and RDFS Property
- DublinCore
- Template for Templates

The screenshot shows the Morla 0.12 application window. The title bar reads "morla 0.12". The menu bar includes "File", "Edit", "Information", "Template", "RDFS", "View", "Graph", "Navigator", and "Query". The address bar shows "file:///home/baku/foaf.rdf". The main area displays a table with columns "Subject" and "Predicate". The table contains several rows of blank nodes and URIs. A modal dialog titled "morla 0.12 - Template: FOAF" is open, showing configuration options for a template. The "Subject" section has "Resource:" selected. The "Maker" section has "FOAF Person" selected and a comment "The maker of this Document". The "Title" section has "String:" selected with the value "FOAF fo" and a Morla logo. The "Language" and "Datatype" sections are also visible.

# Morla's templates?

- A template is composed by inputs
- An input describes a RDF triple
- An input
  - can be required or optional
  - is visible or not
  - has a cardinality (how many photos for a person?)
  - uses other templates (these photos can be described with FOAF image template)
  - can validate itself



# Morla's templates?

- Javascript code: init, check, destroy functions


```
<morla:functionInit>  
    morla_alert("Hello world!");  
</morla:functionInit>
```

A good set of JavaScript functions  
(Mozilla JS or NGS JS).



# Morla's templates?

- Template on startup (Morla without interface)
- You can edit a RDF document with a template
- The templates are downloaded by the Morla's homepage or other websites



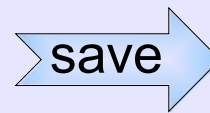
The screenshot shows a window titled "morla 0.12 - Templates import". Inside the window, there is a table with the following data:

Template	Version	Category	URI
FOAF Group	0.3	http://www.morlardf.net/templates/category#foaf	http://www.m
FOAF Image	0.3	http://www.morlardf.net/templates/category#foaf	http://www.m
FOAF Person	0.3	http://www.morlardf.net/templates/category#foaf	http://www.m
FOAF Personal Profile Document	0.3	http://www.morlardf.net/templates/category#foaf	http://www.m

At the bottom right of the window, there is a button with a plus sign and the letter "A".

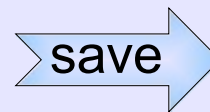
# Morla's modules?

Local File System  
or  
Remote File

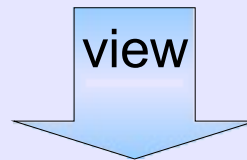


Local File System

Morla's Module  
(mysql, webdav, redland  
storage, ftp, ...)



Morla's Module  
(mysql, webdav, redland  
storage, ftp, ...)



Morla's Module  
(svg, graphs, navigators, ...)



# Morla's modules?

- The modules are extensions (shared objects or DLLs)
- Open, save, view procedures
- A module can be the default choice with a configuration file
- Documentations and examples are online:
  - <http://www.morlardf.net/doc.php>

# Other stuffs?

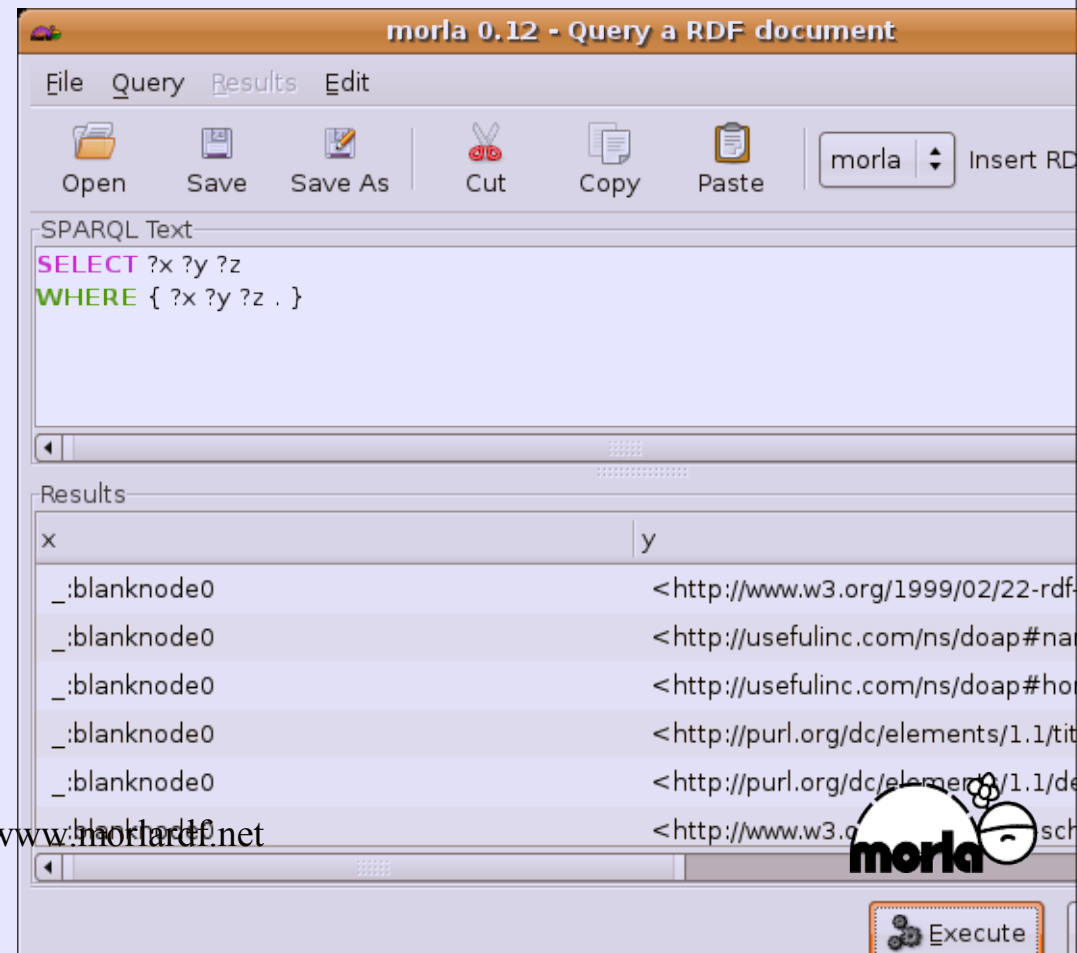
- Documentation:
  - It is written with a XMLSchema like docbook
  - The documentation is online
    - (the default one is from Morla's website via HTTP)
  - It is converted to HTML via a XSLT Document

# Other stuffs?

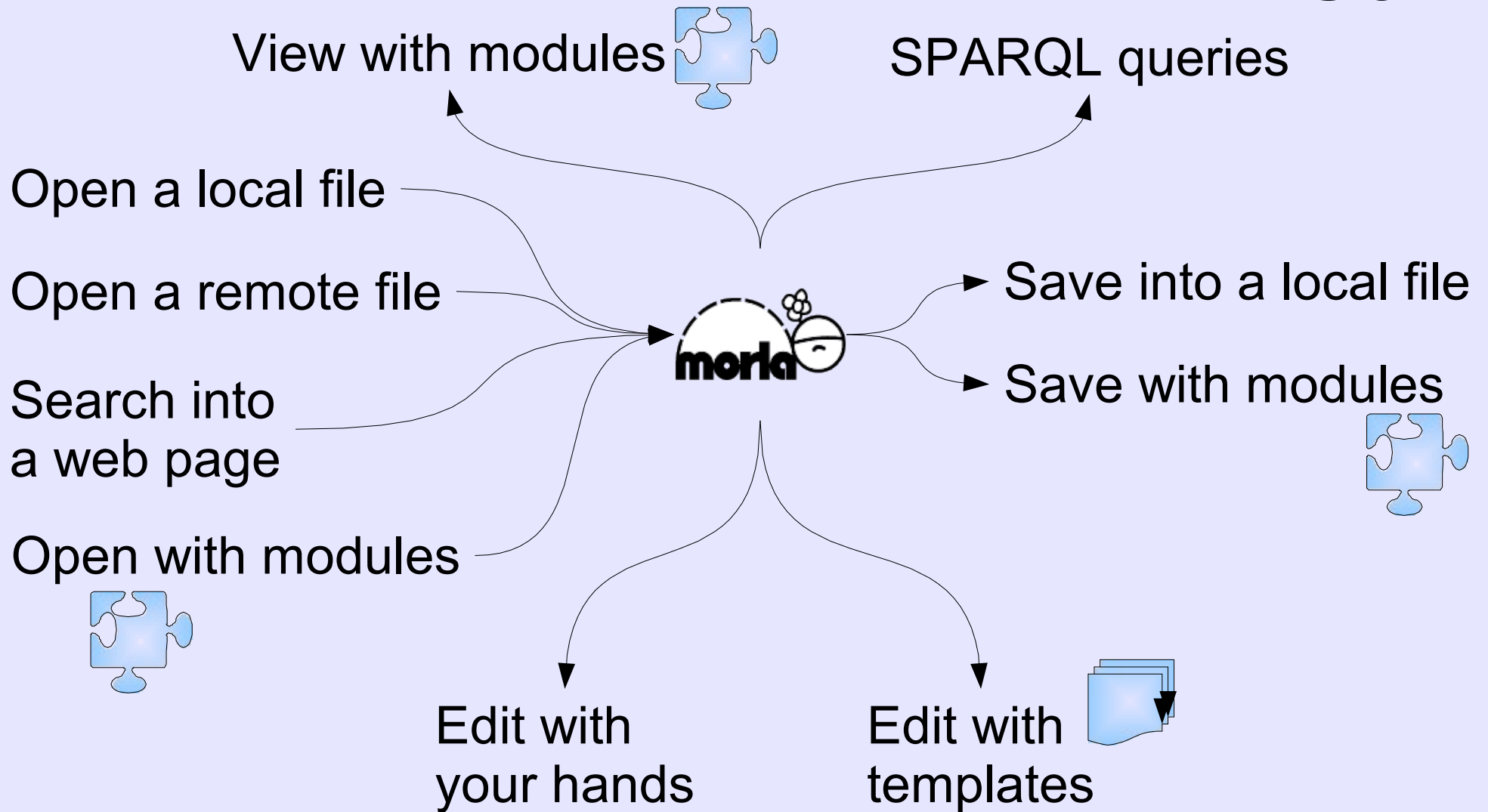
- Graphs:
  - Morla uses graphviz
  - The layout is configurable
- Navigator:
  - You can use Morla as browser for RDF Document
- Validation:
  - Javascript code into your template
  - Datatype validation as default

# Other stuffs?

- Query: SPARQL
  - highlighting
  - save, open, edit, ...
  - autocompletion
  - RDFS support
  - etc.



# So...



# Questions?

Morla - <http://www.morlardf.net>

